

**SACRAMENTO WALDORF SCHOOL
WAIVER APPLICATION AND REOPENING PLAN**

Celebrating 60 Years



**SACRAMENTO
WALDORF
SCHOOL**

AUGUST 26, 2020



CONTENTS:

Our Mission StatementPage 3

Reopening PlanPage 4

Evidence of Consultation with Labor, Parent and Community OrganizationsPage 5

Cleaning and DisinfectionPage 8

Cohorting.....Page 9

Student Bathroom LogisticsPage 9

Entrance, Egress and Movement Within the School..... Page 10

Face Coverings and Other Essential Protective Gear Page 11

Health Screenings for Students and Staff Page 13

Healthy Hygiene Practices Page 15

Identification and Tracing of Contacts Page 16

Physical Distancing Page 17

Staff Training and Family Education..... Page 18

Testing of Students and Staff Page 19

Triggers for Switching to Distance Learning Page 20

Communication Plans Page 21

Supporting our Students Through our Transition to Outdoor Education Page 22

Reopening Schedules Page 24

Early Childhood Page 24

Lower School Page 25

High School..... Page 25



Our Mission Statement

We accomplish our mission by recognizing each student as a unique individual with body, soul, and spirit.

We offer an academic, artistic, and experiential education based on the insights and pedagogy of Rudolf Steiner, which is a holistic approach that meets the needs of the developing child.

By holding a reverence for the path of each individual, we cultivate a dynamic culture of community and life-long learning.

The Sacramento Waldorf School (SWS) 2020 Reopening Plan has been developed in accordance with the California Department of Public Health (CDPH), Sacramento County Public Health (SCPH), SWS Reopening Task Force, and SWS Health, Safety, and Security Committee. We strongly encourage you to read the document carefully. The SWS 2020 Reopening Plan is in alignment with our In-Person Waiver application and has been developed in close consultation and collaboration with our employees, parents, and local community organization.

In response to the time needed to ensure the state's disease registry (CalREDIE) is reporting accurately in order that the waiver process can proceed with due diligence, **we will begin the school year in School-to-Home format with active plans to transition to On-Campus learning in four to five weeks.**

We continue to prepare the campus for in-person outdoor learning, complete our live streaming platform, and maintain the criteria for our elementary waiver. In the meantime, in the best interest of our students and the school community, and the need for rhythm and planning:

- **Grades 1-12** will begin School-to-Home on **Tuesday, September 1, 2020** | K will begin School-to-Home on **Wednesday, September 2, 2020**
- **Grades K-6** will begin On-Campus format/Inclusion* format **Monday, September 28, 2020**, if circumstances allow
- **Grades 7-12** will begin On-Campus format/Inclusion* format **Monday, October 5, 2020**, if circumstances allow

This rollout plan allows our faculty to begin the year's delivery of curriculum to each respective class in support of whole class social-emotional health. We have a significant number of Inclusion* students and are equally committed to supporting our friends at home.

*Inclusion Learning Format: K-12 students who are unable to be enrolled in On-Campus Learning due to health will be offered the option for Inclusion Learning. This format allows students at home to receive curriculum delivered to the On-Campus student learning groups. Inclusion students will receive



their lessons through live streaming, Parent Portal curriculum materials, and follow-up Zoom collaboration. This option also supports the continuity of learning in the case of a learning group needing to quarantine.

Sacramento Waldorf School 2020 Reopening Plan

We affirm that Sacramento Waldorf School (SWS) is addressing the following with consistent guidance from the California Department of Public Health (CDPH) and the Sacramento County Public Health (SCPH). We are following Governor Newsom's guidelines to ensure the health and safety of our students, faculty, and related individuals. In alignment with best practices and recommendations from the American Academy of Pediatrics (AAP), our plan is anchored in what is essential for children and young people: attendance in a safe, creative, and caring environment. The accommodations we are making to our programs and campus life are based on information available and data provided by the State of California, the Center for Disease Control, the AAP, National Association of Independent Schools, and the Western Association of Schools and Colleges (WASC). The WASC has accredited us since 1983 and the Association of Waldorf Schools of North America since 2002. We have a proven history of excellence regarding compliance with the academic and campus standards set before us.

The Sacramento Waldorf School is a nondenominational private school with a 22-acre campus on the bank of the Sacramento River. We have fewer than 200 students in Grades K-6. We are confident that we can keep adults and students safe while reopening our school, and mitigate the risk of spreading COVID-19, even if our county remains on the state monitor list. ANY teacher who wants to teach remotely or any student who needs to receive curriculum remotely can do so.

Classes for all elementary grades, K-6, will be conducted 100% in outdoor learning spaces until risk factors have been significantly reduced to allow for safe instruction indoors. However, we are committed to continuing to use our outdoor learning spaces through the academic year, while providing Continuous Learning for all students. Our Inclusion students will be held with equivalent care and support.

The soft reopening of our campus was carefully conducted during our 2020 Summer Program, held July 6 – July 31 on our campus each weekday from 8 am – 2 pm. We described our approach to the summer program for parents in the following overview: [Overview Video of Sacramento Waldorf School Summer Program 2020](#)

We are confident in our ability to not only create a safe environment for our students, but also to maintain a high level of academic rigor given the decades of programming that has incorporated outdoor learning into our approach to lesson delivery.



An overview of our September Reopening approach is described in the following video:

[SACRAMENTO WALDORF SCHOOL REOPENING VIDEO](#)

We anticipate and are accommodating for the need to move between different formats of lesson delivery throughout the year as the State's level of COVID-19 may rise and fall.

Our primary aim is to provide our students with a Continuous Learning Plan that allows students, faculty, and parents to transition swiftly between formats and modify our approach to best meet the situations presented to us throughout the school year.

- **On-Campus Learning Format:** K-12 – We will be in this learning format when on campus with lessons delivered in outdoor classrooms.
- **Inclusion Learning Format:** K-12 – Students who are unable to be enrolled in On-Campus Learning due to health will be offered the option for Inclusion Learning. This format allows students to receive curriculum delivered to the On-Campus student learning groups. Inclusion students will receive their lessons through video streaming, Parent Portal curriculum materials, and follow-up Zoom collaboration. This option also supports the continuity of learning in the case of a learning group needing to quarantine.
- **School-to-Home Learning Format:** K-12 - We will use a distance learning format if Sacramento Waldorf School, the State of California, and/or Sacramento County deems this as the only option in support of the safety of our community. We will immediately return to in-person instruction when allowed.

Evidence of Consultation with Labor, Parent and Community Organizations:

No faculty or staff will be required to work on campus, and no student will be required to attend school in-person to receive instruction during the time the school is operating under the On-Campus Waiver. Most classes will be offered remotely and synchronously for those students who are remaining home for health reasons. Asynchronous curriculum will also be provided to supplement 2020-2021 learning experiences.

Labor Organization

Sacramento Waldorf School College of Teachers (Teachers Association) is in full support of the waiver, and the full faculty and staff have been in ongoing collaboration through the summer of 2020 to coordinate reopening plans.

August 26, 2020

To Whom It May Concern,



The Sacramento Waldorf School College of Teachers (body representative of all teachers at Sacramento Waldorf School) is in full support of the in-person elementary school waiver after being consulted by the school administration. Teachers welcome the opportunity to teach outdoors and are ready to support all safety measures (masks, social distancing, and hygiene protocols) being implemented. Likewise, any teacher wishing to teach remotely is aware this option is available to them. We have been in close collaboration with the SWS Reopening Task Force, our workgroup who have developed this plan to comply with the recommendations of the Sacramento County Public Health and California Department of Public Health officials.

We look forward to this initiative and are excited by the possibilities that it presents for both teachers and students. We hope that the waiver will be granted.

Sincerely,

SWS College of Teachers

Parent Organization

Sacramento Waldorf School Parent Guild (PTA) supports this waiver, and the whole school parent community has affirmed its support through a school-wide survey on 8.2.20.

August 26, 2020

Dear California Department of Public Health and Authorizing Bodies,

As Co-chairs of the Sacramento Waldorf School's Parent Guild, the representative group of the school's parent body, we were consulted regarding the school's plan to file for a waiver from the local health office in order to open the school. Our parents have been consulted in numerous ways, including parent surveys, Town Hall meetings, Question and Answer sessions, and during class meetings. We are in agreement with the filing of the waiver and the school's plans of reopening the campus.

Co-Chairs of Parent Guild:
Melissa Rainsford
Beau Brown

Community Organization

Sacramento Waldorf School Board of Trustees (Our Liaison in service to Community Organizations) serves as one of our many connections to the greater community. Our Board of Trustees members actively engage with our community through organizations supporting the Fair Oaks and surrounding area. The SWS BoT is in full support of the waiver and have received regular updates regarding COVID related school strategic planning from the onset of February 2020 through the summer of 2020 to



coordinate reopening plans. Board of Trustee members have been present on a number of our faculty-staff committees to take up this work (please see complete list of workgroups below).

August 26, 2020

To Whom It May Concern:

The Sacramento Waldorf School Board of Trustees, the governing body charged with legal and fiduciary responsibility for the school, has been coordinated with and directly involved by the Administration in development of the in-person waiver. The Board of Trustees approves and fully supports the in-person school waiver.

Sincerely,
Board of Trustees President
Esteri Hinman

Board of Trustees Vice-President
Ariel Cumigad

Our full faculty and staff, along with many of our parent community, are collaborating on the campus-wide reopening project. A complete list of workgroups is listed under the section below:

- Health, Safety, and Security Committee | A Collaboration with Physicians, Infectious Disease Specialist, former CDC Director, and the local health agency
- Reopening Task Force | The Overarching Plan
- Steering and College | Statement of Expectations for Faculty, Students, Parents
- Curriculum Benchmark | To ensure curricular rigor originates from clear content objectives
- Scheduling | Pedagogical Informed Scheduling
- Waiver for Elementary Schools | Evidence for Excellence in our Outdoor Learning Initiative
- Campus Planning Oversight | Site Planning
- Outdoor Learning Areas | Classroom Coverings
- Furniture | For the Outdoor Classroom
- Ventilation for Indoor Spaces | Air Flow in Case Indoor Usage Needed
- School-to-Home (Distance Learning) Best Practices | Aligning our Commitments
- Tech Tutorials | Supporting our Staff through Continuing Education
- Live Streaming | Enhancing our Distance Learning delivery in service to full Inclusion
- PPE Inventory and Order Decisions | Pedagogically Informed Equipment
- Hygienics | Practices, Procedure & Bathroom Usage
- Communication | Keeping our Community Informed and Connected

Cleaning and Disinfection:

A daily cleaning schedule has been developed to follow the path of student space usage.

The school buildings, while not in use as daily classrooms, will be cleaned every day using the EPA approved cleaning protocols during the time of COVID-19. We will be using child-safe and ecologically friendly products that meet State and licensing guidelines. All high touch surfaces and bathrooms will be cleaned throughout the day. Common areas (sinks, bathrooms, doorknobs, table-tops, shared items, etc.) will be cleaned and sanitized a minimum of twice daily.

Daily janitorial services will use stringent cleaning practices during the day while deep disinfection of the full campus will be conducted each evening. Our outdoor workspaces and desks will be cleaned with soap and water on a daily basis.

Students took up cleaning curriculum prior to our March 13, 2020 stay-home orders. This curriculum is being further developed to ensure the students are taking part in the proper hygiene practices of our school.

Bathroom use and bathroom ventilation is a high priority in our reopening plan. Learning groups are designated to one bathroom per learning group-cohort. We have rented outdoor bathrooms and integrated routine cleaning/disinfecting during the day to increase the highest safety in our processes of cleaning and disinfection. Given our outdoor learning environment, our highest attention is on the use of bathrooms.

Specific bathroom logistics are outlined below in the “Cohorting” section.*

Cohorting:

Students will stay in outdoor learning groups of 20 or fewer students throughout the entire school day and will not interact with students outside their learning group-cohort at any time during the school day. Kindergarten children will be placed in learning groups of 15 or fewer.

Recesses are scheduled in areas designated exclusively for the learning group-cohort. We traditionally eat snack and lunch in class groupings; our 2020-2021 mealtime plans will retain this practice with the addition of separate outdoor eating areas designated for each learning group-cohort.

SWS Student Bathroom Logistics*

1. Each learning group will have their own bathroom. This will require 8 restrooms for the High School, 16 restrooms for the Lower School (Includes Linden Hall bathrooms), and 4 restrooms for the Kindergarten. We will no longer have male/female bathrooms.
2. Portable toilets are being added to our campus to meet the needs of our population. To reduce aerosols, we are intentionally renting non-flush portables.
3. We have followed all HVAC procedures to ensure the highest ventilation with existing airflow systems in place. Additional fans are being installed in restrooms to create turbulence to reduce the risk of aerosol exposure.
4. We will use bleach at an appropriate level each morning and night to kill viruses in the portable toilets.
5. Students will use bathrooms one at a time, and unless there are emergencies, they will wait 5 minutes between bathroom uses. This might involve a key for bathrooms that teachers would give to students, which would keep cohorts using the correct bathroom and enforce the 5 minutes between use procedure.
6. Handwashing stations will be located outside of portable toilets.



Entrance, Egress, and Movement Within the School:

Due to the smaller number of students in our school and our transition to an outdoor learning environment, we can be in compliance with minor adjustments. Arrival and dismissal times are staggered to provide minimal population density and maximum efficiency of traffic flow to support physical distancing and expediency during the SWS Health and Wellness Intake Process.

We have significant spacing between outdoor classrooms ([See Campus Map](#)).

Individual learning groups-cohorts will generally be in the same outdoor learning space for the entire school day; students will keep the same desk, and supplies will be kept in separate containers. Learning areas will be thoroughly disinfected at the end of each school day, or more frequently if the space is used by another learning group.

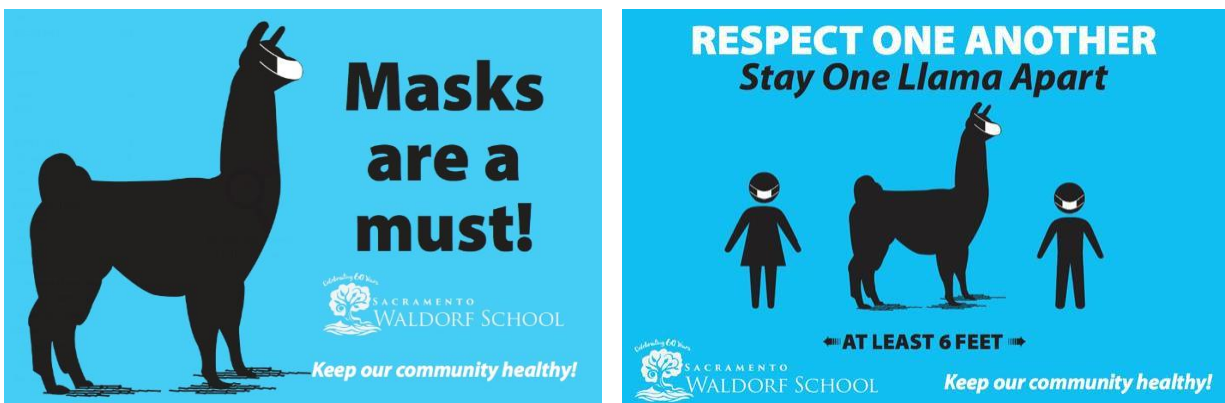
We have mapped our outdoor learning spaces to ensure that pathways of travel between classes are in the awareness of all employees and students as new routines of the school year are developed. Pathways will be marked with physically distanced reminders.

Prior to school reopening on Monday, September 28, we will be hosting class-level visit days to ensure each learning group understands the routines and pathways of each school day.

Face Coverings and Other Essential Protective Gear:

Through the successful implementation of face coverings during our SWS Summer Program, we have already established a campus agreement regarding the wearing of face coverings for all students, faculty, staff, and parents dropping off or picking up their students.

SWS policy requires face coverings for all ages of students, faculty, and staff while on campus. Parents will not be on campus, outside of their vehicles. Parents with children in classes K-2 will have a before school orientation and a one-week grace period, allowing parents to accompany children into their school year, to support their child's sense of security at drop-off time.



Our farm llama has been a symbol of mutual respect and commitment. These signs have been posted throughout our campus since early July.

Our SWS Personal Protective Equipment (PPE) Committee has researched and been in collaboration with physicians and registered nurses regarding the best practices for PPEs that provide the highest protection for our students and faculty, as well as maximum communication support between student and teacher (e.g., see-through masks and face shields). COVID-19 budgetary money is being allocated to ensure the social-emotional and physical health of our students are of the highest priority.

Students will wear masks 100% of the time while on campus, unless a student is seated in their designated, physically distanced, outdoor learning area. Individual student desks and learning spaces will be 6 feet apart.

Our students will be trained on mask process when in transition by a registered nurse that has been collaborating with our PPE workgroup.

Disposable masks will be provided for any student who arrives at school without one or if their disposable mask becomes wet or torn.

Faculty and staff will wear masks 100% of the time while on campus, unless separated from all others in an office or in an outdoor setting 6 feet from any student, faculty, or staff. Teachers may wear face shields without a mask only while delivering content while at least 6 feet from the nearest student. (6 feet is based on current guidance which may be modified.)

Our community will be oriented to best practices regarding mask wearing, removal, and cleaning.

The guidelines include:

Wearing Masks

- Wash hands or use hand sanitizer before handling mask.
- Place mask over nose and mouth and secure under chin.
- Try to make sure it fits snug around sides of face.
- Make sure you can breathe easily.
- Adjust ties or elastic for comfort and fit.
- Avoid touching any area of mask while wearing.

Removing Masks

- Wash hands or use hand sanitizer before handling mask.
- Untie strings/elastic/ties behind head or ears.
- Handle only by strings/elastic/ties without touching the actual mask.
- Fold outside corners together so that the exposed sides are facing each other ("dirty" part of mask).
- Place mask into designated "dirty" bag for washing later at home.
- Be careful not to touch eyes, nose or mouth when removing mask.
- Wash hands or use hand sanitizer after handling mask.

Overall Suggestions

- Wear a mask every day.
- Masks should be washed in warm to hot water every day after use and hung to dry or placed in dryer.
- Keep at least two masks in the "clean" designated bag in backpack.
- Choose a song that is appropriate for the hand washing stations so the children remember how long to wash.
- During recess/lunch, follow the above when removing masks to eat/drink.
- Best material for masks is 100% cotton, tightly woven 2 ply material.
- Have children start to wear their masks each day, in advance of going back to school, and increase the length of mask-wearing to become better conditioned for wearing at school. Practice putting on and removing properly..
- Place name tag or iron-on tag to mask.

[Video: How to Safely Wear a Fabric Mask](#)



Health Screenings for Students and Staff:

In accordance with the AAP, Centers for Disease Control and Prevention (CDC) recommendations, and state and local guidelines, we implemented a successful SWS Health & Wellness Intake Process for our SWS Summer Program.

Please see a short video of faculty use of no-touch thermometer during morning check-in:

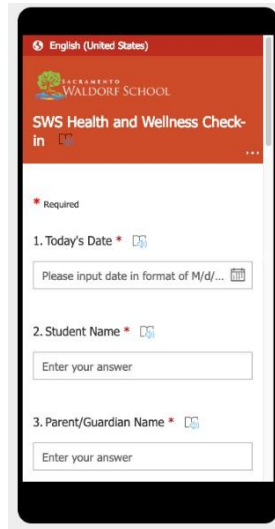
[VIDEO: SWS SUMMER PROGRAM KINDERGARTEN HEALTH & WELLNESS INTAKE PROCESS](#)

SWS Health & Wellness Intake Process Questions:

1. Today's Date
2. Student Name
3. Parent/Guardian Name
4. BEST number to reach parent/guardian during the day.
5. Has your student had a temperature of 100.4 degrees or higher in the last 72 hours?
6. Has your student had any of the following influenza-like symptoms in the last 72 hours?
Cough or sore throat (not due to a chronic or seasonal condition), shortness of breath, chills, repeated shaking with chills, muscle pain, headache, new loss of taste and smell, and/or diarrhea.
7. Did your student have close contact, more than 72 hours ago, with someone who had a confirmed COVID-19 infection?
8. I understand that masks or face coverings are required on SWS campus.
9. I acknowledge that SWS has taken enhanced health and safety measures to keep everyone as safe and healthy as possible for school. An inherent risk of exposure to COVID-19 exists in any place where people are present. In the spirit of community and keeping each other safe, we must all do our part even when off-campus.
10. Do you attest that this is an accurate representation of your student's symptoms and contact information?

This intake process will continue into the 2020-2021 school year, with students receiving temperature and health screenings as they enter campus. We are staggering student arrival times to accommodate the intake process. Students are not bussed to campus; most are dropped off by parents and will be checked as they exit the vehicle. Students who walk to campus will be screened at the entrance to the school. Students Grade 1 and higher will go directly to their outdoor learning area after being screened. Each Kindergarten learning group will use separate entrances and screening areas.

Parents and visitors will not be allowed on campus out of their vehicles, the exception being a one-week grace period for parents of Kindergarten students to walk their child to their Kindergarten gate and be greeted by their teacher.



The screenshot shows a mobile application interface for a health and wellness check-in. At the top, there is a red header with the text "English (United States)" and the Sacramento Waldorf School logo. Below the header, the title "SWS Health and Wellness Check-in" is displayed. A red asterisk indicates that the following fields are required. The first field is "1. Today's Date *", which includes a calendar icon and a text box with the placeholder "Please input date in format of M/d/...". The second field is "2. Student Name *", which includes a person icon and a text box with the placeholder "Enter your answer". The third field is "3. Parent/Guardian Name *", which includes a person icon and a text box with the placeholder "Enter your answer".

The school has identified separated outdoor areas for students who become ill during school to wait until they can be picked up by a parent. Parents will be instructed to pick up their child immediately or to designate another adult to do so.

Any staff or teacher feeling ill will be sent home, and an on-call substitute will be brought in.

Healthy Hygiene Practices:

We have built outdoor handwashing stations for our Summer Program and are in the process of building more handwashing stations to meet the needs of our increased student population that will arrive on campus in September. Our students were taught enhanced hygiene curriculum prior to the March 2020 stay-home orders. This curriculum is being enhanced and incorporated into our daily school rhythm.

As we expect that young children will be touching their face masks, we will be handwashing or hand sanitizing at least once each hour. As was the practice in our Summer Program, a school bell will ring to ensure whole campus practice of this hygiene commitment.

There will be no sharing of food. While we have processes, supplies, and equipment organized for no sharing of items, in unavoidable cases, shared supplies or equipment will be sanitized before use by another learning group.



Identification and Tracing of Contacts:

The SWS Health & Wellness - Symptom Screening Process used in the Summer Program is being enhanced with an additional level of health and wellness tracking that is monitored by our SWS staff and tracked via a real-time reporting system. Any positive COVID-19 tests of student or faculty-staff member will be reported to the Sacramento County Public Health Department (SCPH) by our designated SWS health staff-officer. The health staff-officer will maintain current learning group assignments and schedules of all students to be readily available for any on-campus contact tracing.

Our middle school and high school faculty will record data following each session with a learning group to note if there have been any interactions between students that could be considered COVID-19 contacts in order to follow up if a student has presumptive symptoms or tests positive for COVID-19. This data will be compiled daily by our MS and HS administrative assistants.

As outlined in our [Exclusion Plan](#), we will follow the [July 17, 2020 CDPH reopening guidelines](#) when a student or staff member has a positive COVID-19 test. A confirmed case will prompt quarantine of the student and exposed members of the learning group for 14 days. If a teacher is sent home, the cohort will remain intact, will be supervised by an approved faculty or staff member, and when possible, the students' usual teacher will deliver the lesson to the students remotely. If a teacher is unable to teach, a substitute teacher will serve in this role.

We will maintain confidentiality of family information in alignment with SWS communication systems that allow staff and families to self-report symptoms and receive prompt notifications of exposures and closures, while maintaining confidentiality, as required by FERPA and state law related to privacy of educational records and other privacy laws. SCPH may contact SWS health-staff officer Angela Cowham at acowham@sacwaldorf.org.

Sacramento County is onboarding a nurse who will take all the reports for schools. They are developing a process and plan to have that information soon.

In the meantime, SWS will use the Sacramento Country Public Health School Hotline: 916-661-7331.

Physical Distancing:

As listed in the “Entrance, Egress, and Movement Within the School” section, maps have been established to denote the pathway of movement throughout the campus each day.

Outdoor classrooms are set up on our 22 acres to not only be physically distanced from each other, but also to ensure auditory distance to support classroom learning and minimize student distraction. Please see map: [MAP OF SWS OUTDOOR CLASSROOMS V 8.5.20.](#)

Outdoor furniture is being built by our school parent body to provide a natural separation during instruction. The lower grades are using ground indicators to support the young child's understanding of 6-foot distancing.





Staff Training and Family Education:

We are conducting whole school faculty-staff trainings for COVID-19 Safety-for-All and Student Support Procedures as follows:

- **PPEs | BEST PRACTICES FOR TRANSITIONS | TBA** [Karla Burgess, Registered Nurse]
- **OVERALL COVID-19 SAFETY-FOR-ALL TRAINING | Thursday, August 13 and Thursday, August 27** with follow-up trainings scheduled throughout the fall term. [Jenn Miller, HR Consultant]
- **STUDENT SUPPORT DURING COVID-19 | Thursday, August 20 and Friday, August, 21** [Kim John Payne, MEd Pediatric and Adolescent Counseling]

Parents have been informed of the SWS Reopening Plan through our school's Town Hall meeting webinars and available recordings, and through individual class parent meetings. Ongoing parent communications and trainings will be held in the weeks leading up to On-Campus learning to prepare our families for a successful transition.

Testing of Students and Staff:

Anyone who triggers intake with COVID-like symptoms will be subject to exclusion from school as per the Sacramento Waldorf School COVID-19 Exclusion Policy (below). Testing may be available through the [county](#), private healthcare provider, or private lab.

We recognize that a negative test does not rule out COVID-19 infection. Unless the individual has gone to a medical provider and that provider has been able to provide an alternative diagnosis such as flu or RSV, Public Health recommends that the symptomatic individual be isolated for 10 days even with a negative test result.

Faculty and staff will be tested at regular intervals. 25% of faculty and staff will be tested every two weeks on a rotating basis once regular testing is available with a result turnaround of 24-48 hours. We will actively utilize the testing resources available to our school.

Sacramento Waldorf School COVID-19 Exclusion Policy

	Student or Staff with:	Action:	Communication:
1.	COVID-19 Symptoms (e.g., fever, cough, loss of taste or smell, difficulty breathing) Symptom Screening: Per CA School Sector Specific Guidelines	<ul style="list-style-type: none"> Individual sent home Recommend testing (If positive, see #3; if negative, see #4) School/Learning Group remain open If evaluated by physician and confirmed nonCOVID-19 diagnosis explains symptoms, student returns per specific disease guidelines (e.g. 24 hour after starting antibiotics for strep throat) 	<ul style="list-style-type: none"> None needed
2.	Close contact (based on current CDC/ CDPH definition) with a confirmed COVID-19 case	<ul style="list-style-type: none"> Send individual home Individual will be in quarantine for 14* days from last exposure Recommend testing (but negative testing will not shorten 14-day quarantine) School/ Learning Group remain open 	<ul style="list-style-type: none"> Learning Group will be notified of a known contact
3.	Confirmed COVID-19 case infection	<ul style="list-style-type: none"> Notify the local public health department Isolate case and exclude from school for at least 10 days from onset of symptoms. After this period, 3 symptom-free days are required before returning to school Quarantine Learning Group and exclude exposed contacts (likely entire EC/LS Learning Group) for 14 days after the last date the case was present at school while infectious Recommend testing of contacts, prioritize symptomatic contacts Disinfection and deep cleaning of classroom and primary spaces where individual(s) spent significant time Campus remains open; pivot to distance learning if total school enrollment of 5% positivity or less at the discretion of the school. 	<ul style="list-style-type: none"> School community notification of a known case
4.	Tests negative after symptoms	<ul style="list-style-type: none"> May return to school 3 days after symptoms resolve School/Learning Group remain open 	<ul style="list-style-type: none"> Learning Group will be notified of the negative test



Sacramento County Testing Locations:

[SACRAMENTO COUNTY COMMUNITY TESTING LOCATIONS](#)

[SACRAMENTO COUNTY Rite Aid & Walgreens COVID TEST SITES](#)

Triggers for Switching to Distance Learning:

The SWS health officer will monitor and report positive cases among any student, faculty or staff, and the school will be closed for in-person learning within 24 hours if either the faculty or student population reaches a 5% positivity threshold during a 14-day period.

Individual school closure (Individual schools defined as: Early Childhood, Lower School, Middle School, High School) will be based on the number of cases, the percentage of the teacher/students/staff that are positive for COVID-19, and following consultation with the Local Health Officer. Wider campus closure may be appropriate when there are multiple cases in multiple cohorts in a school (EC, LS, MS, HS) or when at least 5 percent of the total number of teachers/student/staff are cases within a 14-day period, depending on the size and physical layout of the school.

The Local Health Officer may also determine that school closure is warranted for other reasons, including results from public health investigation or other local epidemiological data.

If campus is closed, we will reopen after 14 days and the following has occurred:

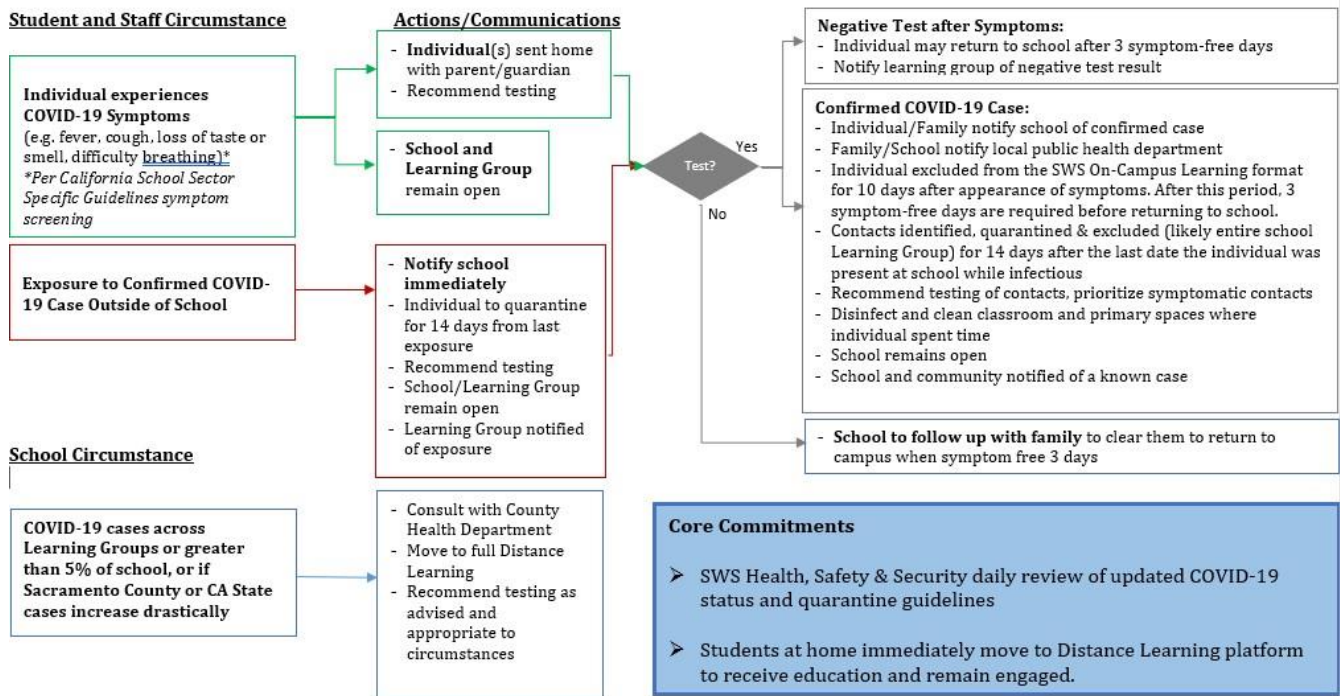
- Deep cleaning and disinfection,
- Public health investigation, and
- Consultation with the local public health department.

Communication Plans:

Communication regarding cases and exposures will be relayed through our parent communication portals, Veracross and Parent Square. We have reviewed our communication process with our HR consultant to ensure adherence to state and local guidelines as well as our parents' rights to privacy.

Link to: [SWS COVID-19 Communications Plan](#)

Sacramento Waldorf School COVID-19 Communications Plan



Supporting Our Families Through Our Transition to Outdoor Education

In preparation for the 2020-2021 school year, we will support the SWS students and parents in their transition to an outdoor educational setting through a series of parent education sessions. Parent resources will include:

- Outdoor clothing list for students*
- Suggested personal gear
- Food and water guidelines

A phased rollout of in-person learning will occur if the K-6 Waiver is approved or if the County has been off the monitor list for 14 consecutive days.

Before the first day of On-Campus learning, younger learning groups will practice outdoor learning routines and our enhanced hygiene and distancing practices, such as: SWS Health & Wellness Intake Process, arrival, safe physical distancing, face covering breaks, recess, lunch and snack break, dismissal.

Sturdy outdoor shelters will protect our students and faculty from the elements to make continuous learning possible in all weather conditions and seasons. These will be installed on our campus by Friday, August 28, 2020. Please do not hesitate to contact Kat McFee, Administrator, about details regarding our outdoor classroom plans.

SWS has consulted with the general process of the Green School Yards:

- [National Initiative of the Green School Yards](#)
- [COVID-LEARN-OUTSIDE](#)

Our SWS Reopening Task Force confirms that our process of campus reopening exceeds the project management expectations for schools collaborating on this project across the nation.

“ There is no bad weather, only bad clothing.”

***Outdoor Clothing List for Students**

Summer

Sunscreen

Larger Water bottles

Sun Hat

Long sleeve t-shirt (cotton)

Clothing light and breathable (cotton)

Winter

Umbrella

Hat/beanie (wool/synthetic that can cover ears)

Earmuffs

Scarf

Gloves

Handwarmers

Raincoat

Jackets (with vents)

Hooded warm heavy coat/for cold non rainy days

Hooded Waterproof down jacket (warm and stays dry in rainy weather)

Hooded Synthetic-insulation-jacket

Fleece-and-soft-shell-jackets (not as good as wool)

Snow Jacket

3-in-1 jacket (combine rainproof outer shell and insulated liner)

Layers of shirts/wicking base layer

Undershirt/thermals (for extra cold weather)

Long sleeve shirt (use synthetic or wool wicking long-underwear base layer that provides warmth and keeps skin dry)

Long johns/ thermals

Synthetic or wool underwear

Sweater

Long pants

Rain pants

Fleece pants

Thick wool socks (have an extra pair on hand)

Rainboots/Winter boots

HOW TO LAYER

Base layer (underwear layer): wicks sweat off your skin (silk or wool)

Middle layer (insulating layer): retains body heat to protect you from the cold

Outer layer (shell layer): shields you from wind and rain

SWS 2020 REOPENING SCHEDULES

We are doing our utmost to ensure that our students will be the least affected by the changes we need to make, and our creative teachers are working on strategies to turn the necessary adjustments into positive experiences and growth opportunities, as much as they can. This plan is designed to help faculty, parents, staff members, and students create and experience the very best possible school year under the current circumstances. As we go through the year, we will welcome parent feedback and ideas to enhance the students' experiences. It is our goal to provide all students with the nurturing, rich learning experience we have come to expect from Sacramento Waldorf School, while also helping all of us build resilience, trust, and flexibility during these unprecedented times.

EARLY CHILDHOOD

For the 2020-21 school year, our White Rose and Red Rose Early Childhood Program will be held with great integrity, through planning, and commitment to our children and their families.

- Our kindergarten yard will be divided into 4 smaller areas for each group of children.
- Groups will not interact with other groups to decrease the exposure to other children and adults.
- Group placements will be announced in mid-September as state guidelines and recommendations may change.
- ALL adults and children on campus will be wearing masks at all times.
- The kindergarten program will be nature-based and, therefore, will be all the time outdoors.
- The kindergarten program will run from 8:00 am-12:30 pm.

KINDERGARTEN EXTENDED CARE will run from 12:30pm-5:00pm

- Early Childhood Extended care will be available; only two groups, no larger than 15 students per grouping.
- You must sign up for Extended Care no later than September 14.
- Each class will have its own outdoor gate entrance.
- Drop-off and Pick-up: To limit the potential for exposure, we kindly require that parents wear a mask or cloth face-covering, and respect physical distancing while on campus and refrain from entering any building on campus.
- Drop-off and Pick-up will take place at the exterior gate of your group.



LOWER AND HIGH SCHOOLS*

*Schedules are Subject to Change

SWS 1-8 academic schedule, click here:

[Rotation 1 | School-to-Home Class Schedule](#)

[Rotation 1 | On-Campus & Inclusion Class Schedule](#)

LOWER SCHOOL EXTENDED CARE will run from 12:35pm-5:00pm

- Lower School Extended Care will be available in grade level groupings for grades 1 - 8.
- Students in Extended Care grade level groupings will remain in the same class learning groups during the regular school day.
- You must sign up for Lower School Extended Care no later than September 14.
- Drop-off and Pick-up - To limit the potential for exposure, we kindly require that parents wear a mask or cloth face-covering, and respect physical distancing while on campus and refrain from entering any building on campus.
- Drop-off and Pick-up will take place at a designated outdoor location for your group.

SWS 9-12 academic schedule, click here:

[HS Distance Learning Schedule Fall 2020](#)

Sacramento Waldorf School Commitment to our Students, Families, and Faculty

[SWS BEST PRACTICES | COMMITMENTS](#)

Parent Communications

- We will maintain all our communications with the families via our Veracross Parent Portal and Parent Square communication platforms.
- We will post all class materials on these platforms.
- We will have a weekly newsletter.

Festivals

Festivals will take place in our outdoor classrooms and in procession format. These seasonal experiences will be live-streamed or recorded for community integration. At this time, festival attendance will involve a coordination of our student learning groups and correlated faculty and staff, until festivals and events are reviewed again in January 2021.



Social and Emotional Health | Student Support

Our school counselor and social-emotional teacher are in collaboration with the SWS Student Support Team to ensure our students are well held through these challenging times. Our faculty is participating in a series of student support trainings to ensure that we work together as a faculty-staff-parent collaborative to best serve the students of our school.